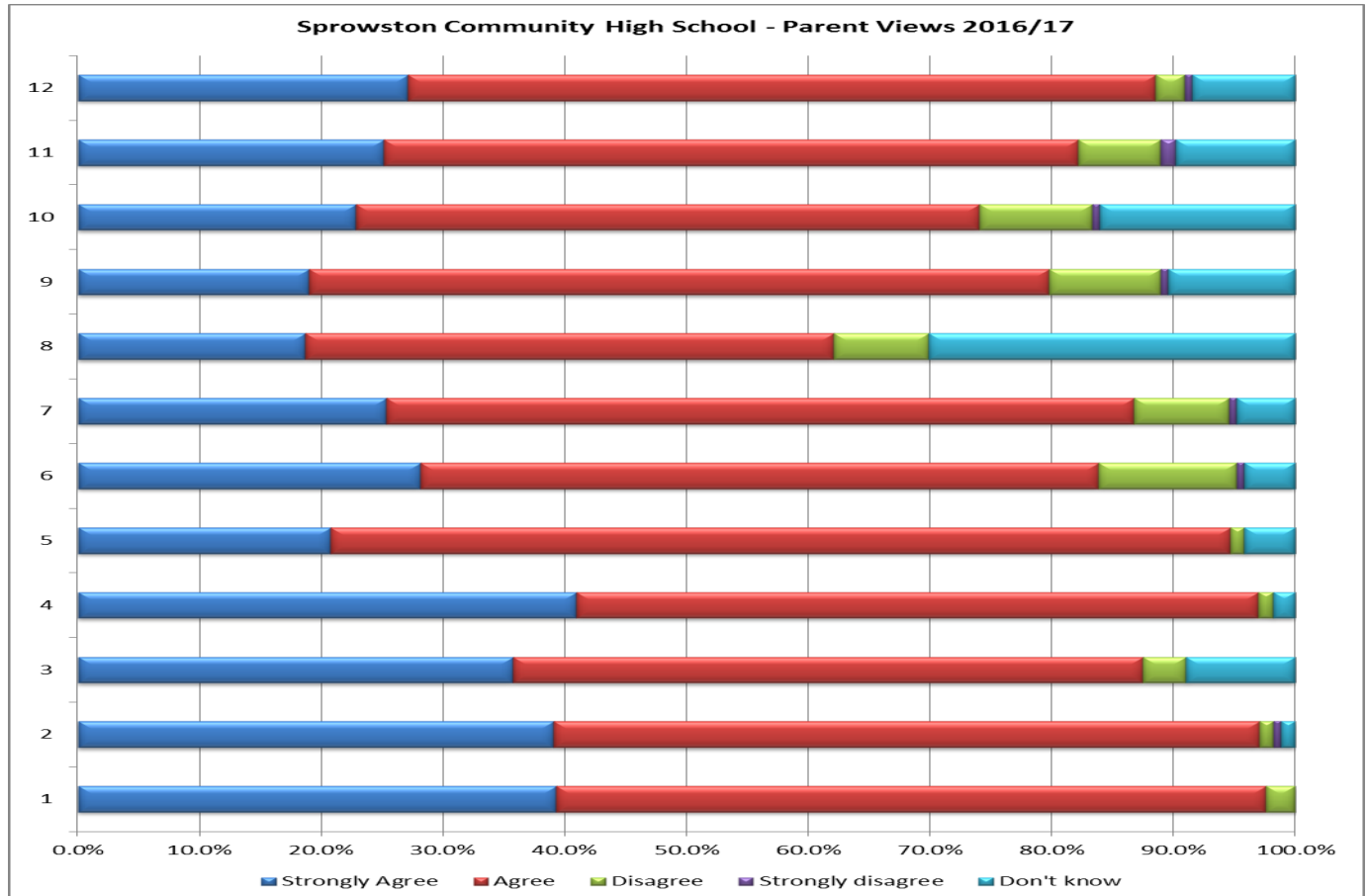


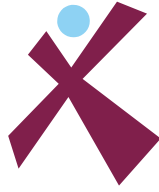


## Sprowston Community High School – Years 7&10 Parent Survey Summary (Dec 2016)

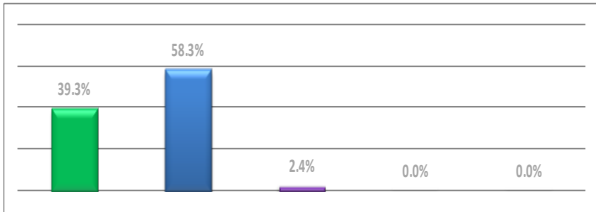


- 1 My child is happy at school
- 2 My child feels safe at this school
- 3 My child makes good progress at this school
- 4 My child is well looked after at this school
- 5 My child is taught well at this school
- 6 My child receives appropriate homework for their age
- 7 This school makes sure its pupils are well behaved
- 8 This school deals effectively with bullying
- 9 This school is well lead and managed
- 10 This school responds well to any concerns I raise
- 11 I receive valubale information from the school about my child's progress
- 12 Would you recommend this school to another parent?

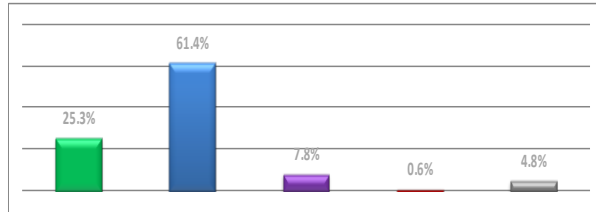




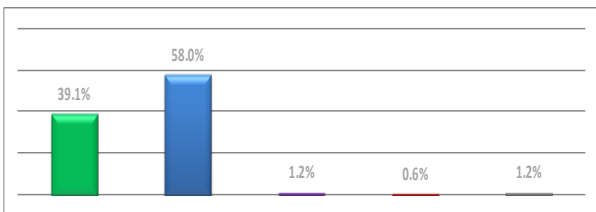
**Sprowston Community High School - Parent View 2015/16 (March '16)**



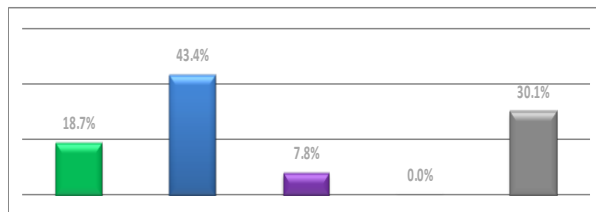
Q1. My child is happy at school Total number of responses 168



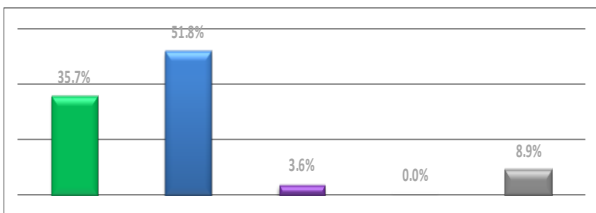
Q7. This school makes sure its pupils are well behaved Total number of responses 166



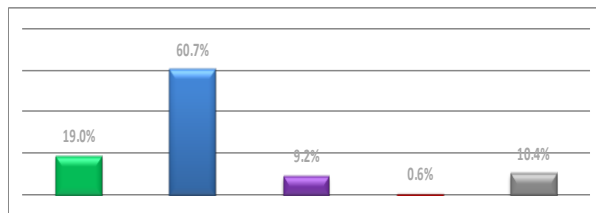
Q2. My child feels safe at this school Total number of responses 169



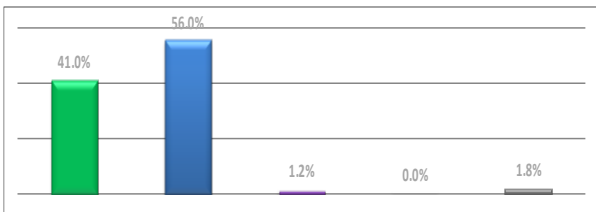
Q8. This school deals effectively with bullying Total number of responses 166



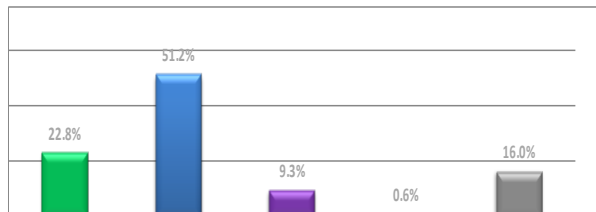
Q3. My child makes good progress at this school Total number of responses 168



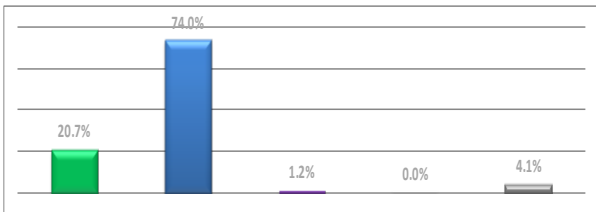
Q9. This school is well lead and managed Total number of responses 163



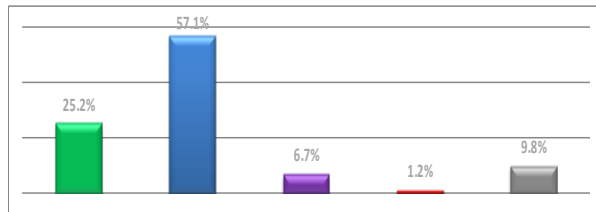
Q4. My child is well looked after at this school Total number of responses 166



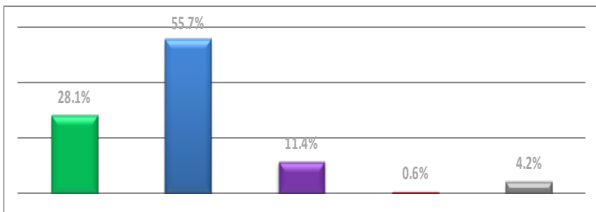
Q10. This school responds well to any concerns I raise Total number of responses 162



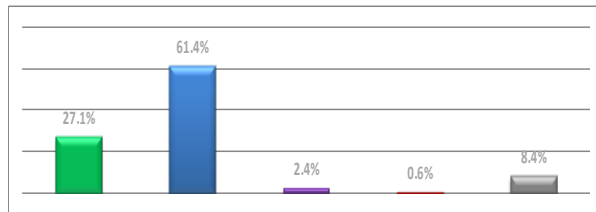
Q5. My child is taught well at this school Total number of responses 169



Q11. I receive valuable information about my child's progress Total number of responses 163



Q6. My child receives appropriate homework for their age Total number of responses 167



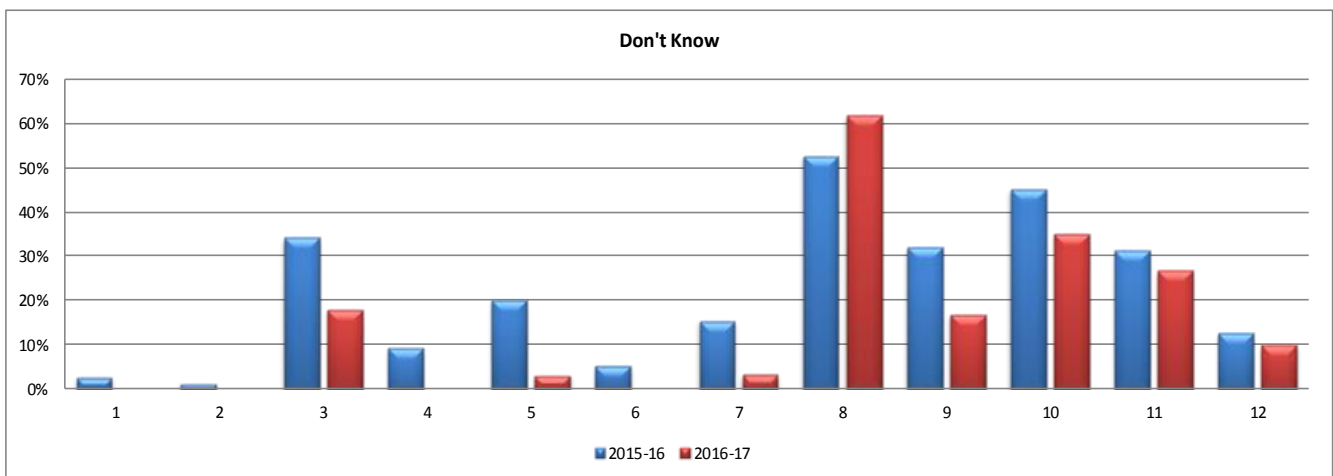
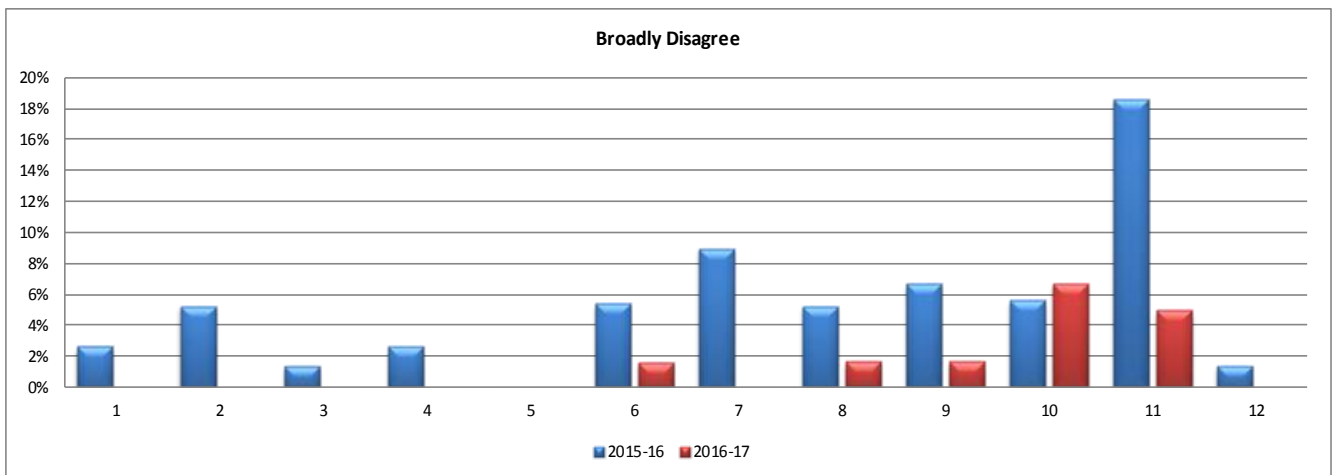
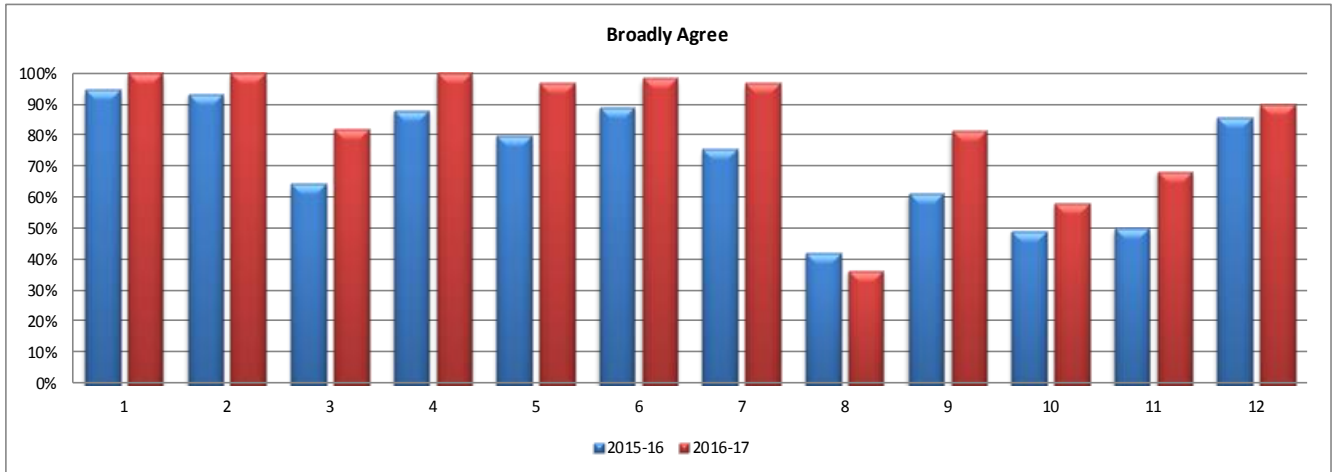
Q12. Would you recommend this school to another parent? Total number of responses 166





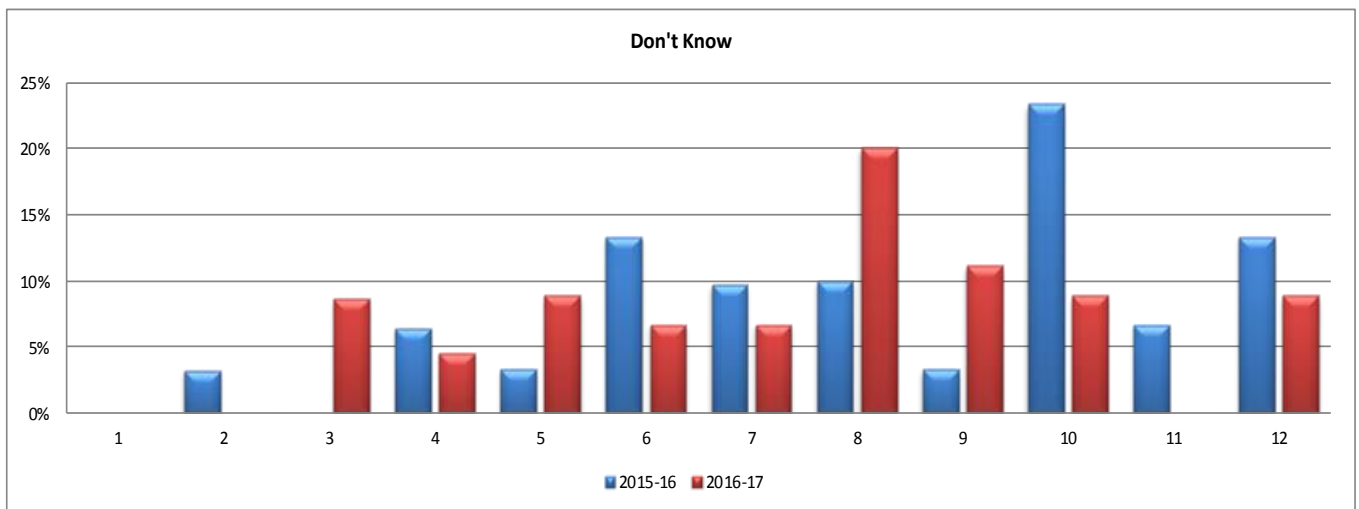
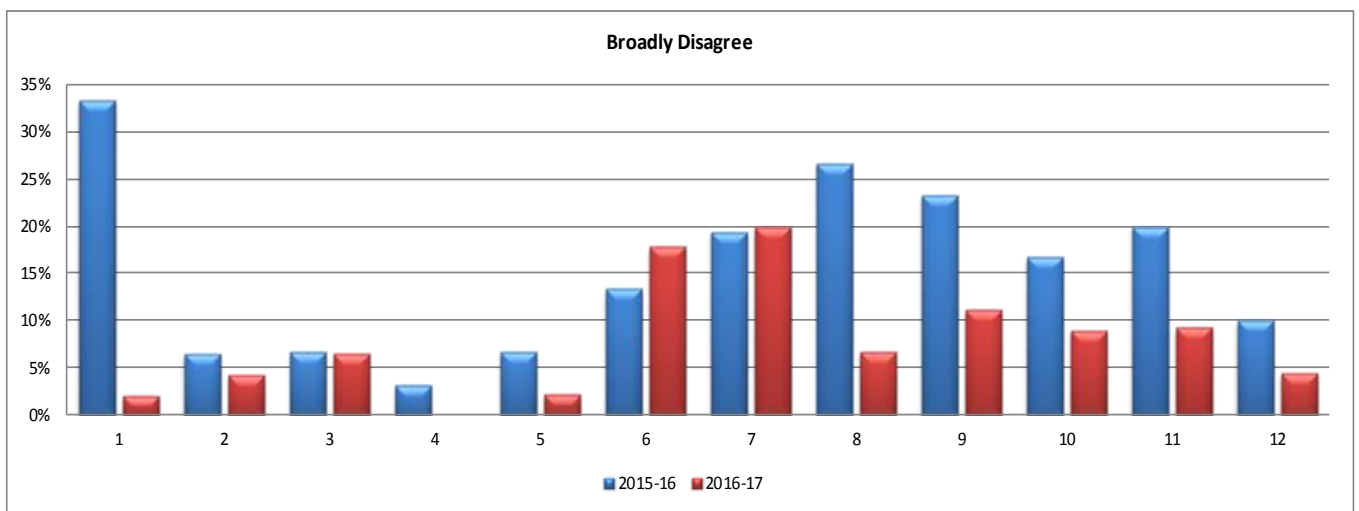
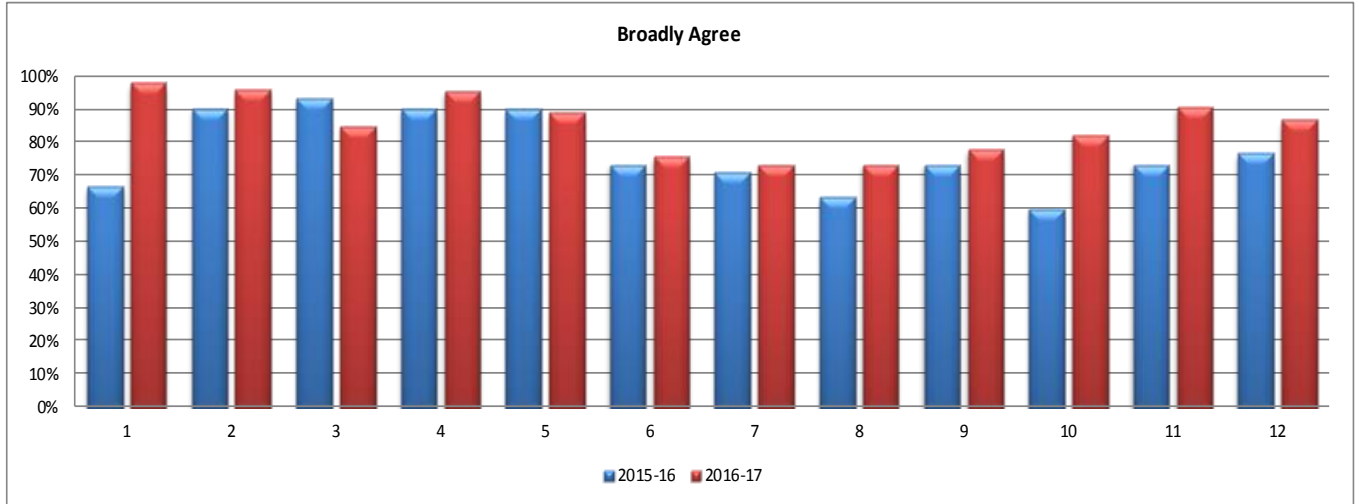
## Sprowston Community High School - Parent View Comparisons 15/16 - 16/17

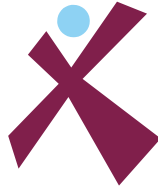
### Year 7





## Year 9





## Year 10

